

ÉSTHETEAK

ESTHELEATHER COLLECTION

When it comes to class, nothing can beat the allure of leather. Éstheteak brings you an exclusive collection of cabinet fronts and wardrobe accessories, made in wood and metal, and clad in vegan leatherette. Smartly designed organizers to offer the most efficient way of storage, and the rich look of leatherette gives it a super-luxurious feel. Practical, sustainable and minimalistic... these accessories will take your wardrobes to a whole new level.



MANUFACTURING EXCELLENCE



The luxury of leatherette, with the precision of Durkopp Adler machines with the highest quality German needles and thread are brought together in perfect synergy. EstheLeather wardrobe accessories are set to be the new trend in market.

INDEX

03	cabinet fronts
05	organizers
07	storage boxes
09	hangers
11	drawer baskets
14	mats
16	color/finishes

DOORS AND DRAWER FRONTS

Doors and drawer fronts have seen endless innovation... from wood to glass, to metal. EstheLeather fronts are the newest trend, and one which will have a lasting effect. Take a look at some of the most artistic fronts for wardrobes and cabinets in the rich and fascinating leatherette.

EstheLeather fronts can be made with in-built handles or surface handles from our collection or provided by the client. They can also be clad only on the front with trim for the sides, or can be covered in leatherette on front and back, with or without metal trim.

DESIGN POSSIBILITIES:

Cabinet Doors - Drawer Fronts - Wall Cladding - Head Boards
- Room Doors - Sliding Doors - Room Dividers - Bi-fold Doors



FRONTS - SIZE GUIDE

SLIDING DOOR:

- 4mm [$\frac{5}{32}$ "] to 10mm [$\frac{3}{8}$ "] panel thickness with HDHMR (with leatherette)
- Maximum size (W ×H): 1300 mm [$51\frac{3}{16}$ "] × 3000 mm [$118\frac{1}{8}$ "]
- Minimum size (W ×H): 500 mm [$19\frac{1}{16}$ "] × 700 mm [$27\frac{9}{16}$ "]
- Handles and door frames supplied by raumplus GmbH
- Padding - Optional (if padding is opted stitching is mandatory)
 - Minimum padding - 1mm [$\frac{1}{32}$ "]
 - Maximum padding - 4mm [$\frac{5}{32}$ "]
 - Minimum Front size - 100mm x 100mm [4"x4"]

CABINET DOORS:

- 18mm [$\frac{11}{16}$ "]& 28mm thickness with HDHMR (with leatherette)
- 18mm & 25mm thickness birch ply (with leatherette)
- Maximum size (W ×H): 24" x 96"
- Handle from our collection or as supplied by client (inbuilt / external) (if supplied in advance, screws can be hidden)
- Padding - Optional (if padding is opted stitching is mandatory)
 - Minimum padding - 1mm [$\frac{1}{32}$ "]
 - Maximum padding - 4mm [$\frac{5}{32}$ "]
 - Minimum Front size - 100mm x 100mm [4"x4"]
- Door straightener (can be concealed in the door)



ORGANIZERS

These intelligently designed drawer EstheOrganizers store your jewelry and accessories with ease of access and style. From rings, earrings, and necklaces to watches, sunglasses, and belts, each has its uniquely designed space. Now, always find what you are looking for in a jiffy, and protect your valuables from damage due to disorganization.

Be it a gentleman's drawer, a lady's drawer... or your little diva's, keep all the accessories in order, always.



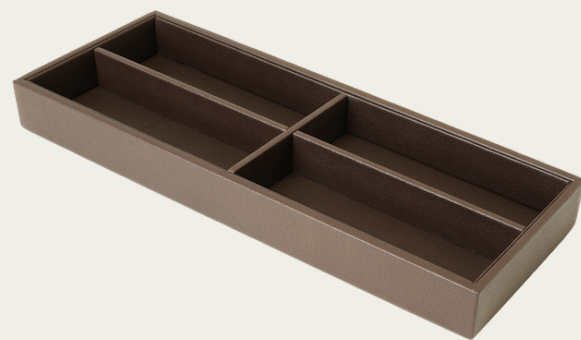
ORGANIZERS - SIZE GUIDE

EstheOrganizers are available in 2 different depths as follows:

ORGANIZER (W X D X H)

A. Tray Size - 5 7/8" x 15 3/4" x 2"

B. Tray Size - 5 7/8" x 17 3/4" x 2"

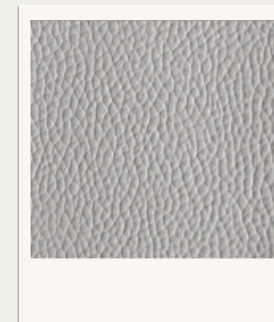


COLOR GUIDE

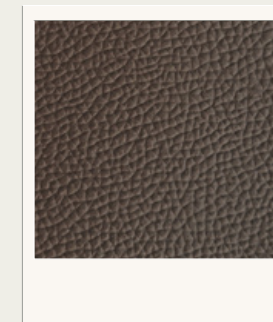
EstheOrganizers are readily available in 3 classic shades of grey, tan and brown leatherette. Besides the 3 standard colors in grain, there is a range of 15 exclusive options in plain and crocodile textures, in varied colors. These options are available on request. You can view our different groups of shades in leatherette on Page 16.

Other Specifications:

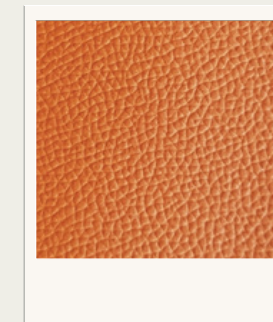
Special Colors (Group I, II & IV) are available on request as per MOQ. Logo stamping is possible in Group I & II



Soft Grey
Grain



Dark Brown
Grain



Natural Light
Brown Grain

BOXES

EstheBoxes come in handy when storing your occasionally used, but rather valuable belongings – be it clothes, purses, shoes or other accessories. Not only do the boxes protect the items from damage, but they also help separate them from everyday items. This makes everything organized and so easy to access.

The ideal place for boxes is the top-most or the bottom-most shelf of your wardrobe. Things that you do not require every day, can be stored in boxes and put away in lesser used spaces. Boxes are space maximisers. Often times, the vertical space in a shelf gets wasted because you cannot stack items or clothes beyond a point, the box can easily fill up this space, making optimum use of the available vertical space.



BOX - SIZE GUIDE

EstheBoxes are available in 2 different widths and 2 different heights. The standard sizes are made in such a way that they fit into any wardrobe.

BOX (W X D X H)

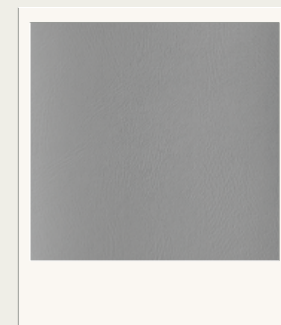
- A. Overall Size - $11\frac{1}{32}''$ x $18\frac{1}{2}''$ x $5\frac{3}{8}''$
- B. Overall Size - $16\frac{1}{2}''$ x $18\frac{1}{2}''$ x $5\frac{3}{8}''$
- C. Overall Size - $11\frac{1}{32}''$ x $18\frac{1}{2}''$ x $10\frac{3}{8}''$
- D. Overall Size - $16\frac{1}{2}''$ x $18\frac{1}{2}''$ x $10\frac{3}{8}''$

COLOR GUIDE

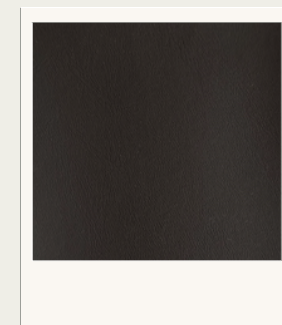
EstheBoxes are readily available in 3 classic shades of grey, tan and brown leatherette. Besides the 3 standard colors, there is a range of 17 exclusive options in plain, grain, woven and crocodile textures, in varied colors. These options are available on request. You can view our different groups of shades in leatherette on Page 16.

Other Specifications:

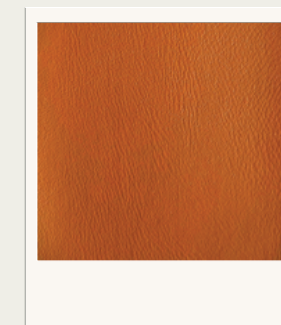
Special Colors (Group I, II, III & IV) are available on request as per MOQ. Logo stamping is possible in Group I & II.



Elephant Grey
Plain



Deep Brown
Plain



Smooth Tan
Plain



HANGERS

The most important accessory in the wardrobe of a conscientious dresser. EstheHangers in leatherette that not only look impressive, but function brilliantly. Crafted to take utmost care of your finest coats, trousers, dresses, scarves and more. Impressive in appearance and sturdy in nature, these exquisite leatherette hangers add luxury and comfort to your wardrobe. The hangers are ingeniously designed according to the garment which will be hung on it.



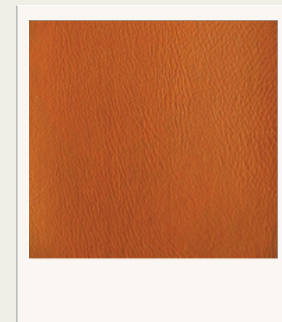


COLOR GUIDE

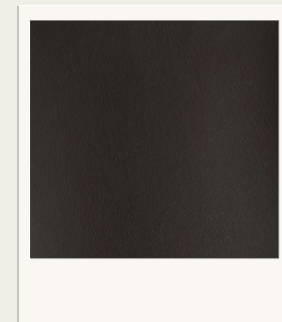
EstheHangers are readily available in 2 classic shades of tan and brown leatherette. Besides the 2 standard colors in plain, there is a range of 10 exclusive options in plain in varied colors. These options are available on request. You can view our different groups of shades in leatherette on Page 16.

Other Specifications:

Special Colors (Group II) are available on request as per MOQ. Logo stamping is possible in Group II.



Smooth Tan
Plain



Deep Brown
Plain



DRAWER BASKETS

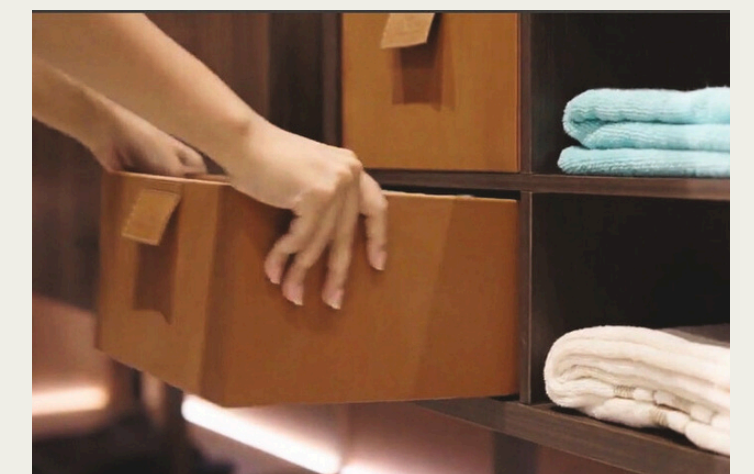
EstheDrawer Baskets are a must-have to give your haute couture, expensive gadgets or children's things, the exclusive space they deserve. Easy to remove and replace, the drawers are simple and have high utility. Lined with premium vegan leather to protect your delicate silks and georgettes or gadgets and toys.

Place the drawer baskets at an arm's length The ideal place for the drawer baskets is in the center of your wardrobe, where they are easy to access every day. You can place them on the shelves, or in pigeon holes, which gives a very aesthetic look. Drawer baskets are great to fill gaps that normally go to waste, making optimum use of space.





From your expensive clothes and gadgets, to your child's limitless essentials. The soft leatherette protects your precious items, and you can stack these drawers baskets over each other, without damaging the contents.



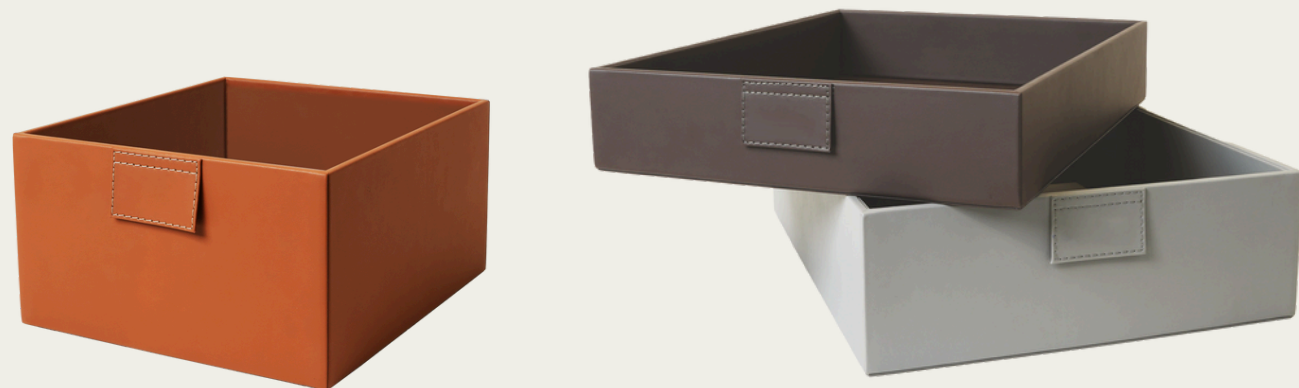
DRAWER BASKET - SIZE GUIDE

EstheDrawer Baskets are available in 2 different sizes. The standard sizes are made in such a way that they fit into any wardrobe. Even then, the drawer baskets can be fully customized according to the size you need.

DRAWER BASKETS (W X D X H)

A. Box Size (outer) - $14\frac{3}{16}''$ x $17\frac{11}{16}''$ x $3\frac{1}{8}''$

B. Box Size (outer) - $14\frac{3}{16}''$ x $17\frac{11}{16}''$ x $4\frac{3}{4}''$

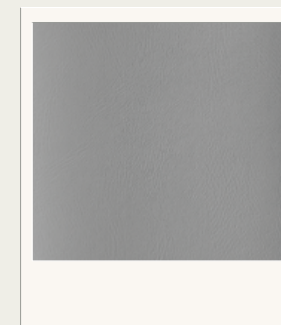


COLOR GUIDE

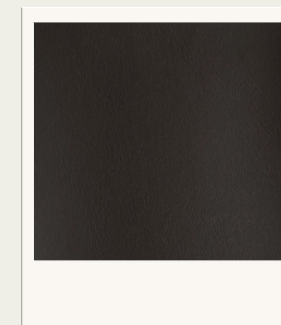
EstheDrawer Baskets are readily available in 3 classic shades of grey, tan and brown leatherette. Besides the 3 standard colors, there is a range of 17 exclusive options in plain, grain, woven and crocodile textures, in varied colors. These options are available on request. You can view our different groups of shades in leatherette on Page 16.

Other Specifications:

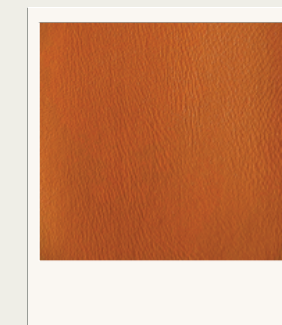
Special Colors (Group I, II, III & IV) are available on request as per MOQ. Logo stamping is possible in Group I & II



Elephant Grey
Plain



Deep Brown
Plain



Smooth Tan
Plain

MATS

The humble EstheMats has now got a stylish makeover in leatherette. Available in matching color and texture that complements the other organizers in the wardrobe. The mats will soon be the quintessential accessory to every modern wardrobe. The mats are used on drawer bottoms, on shelves to protect the surface as well as the items stored. EstheMats can also be a great gift with an option to customize them with your logo. Mats on the shelves complete the rich look of the wardrobe.



MATS - SIZE GUIDE

EstheMats can be made in any size, according to the requirement in the wardrobe.

It's a good idea to match the mat to the organizer. So, the additional space created between the organizers, actually becomes an additional niche to hold items, without having another organizer to fill up the space.

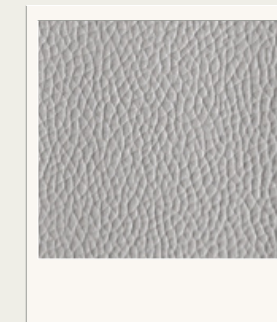
You can personalize the accessories with your own name or brand logo.

COLOR GUIDE

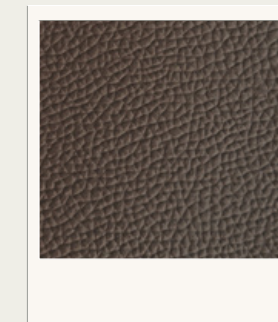
EstheMats are readily available in 3 classic shades of grey, tan and brown leatherette. Besides the 3 standard colors in grain, there is a range of 17 exclusive options in plain, woven and crocodile textures, in varied colors. These options are available on request. You can view our different groups of shades in leatherette on Page 16.

Other Specifications:

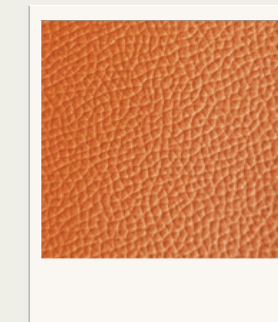
Special Colors (Group I, II, III & IV) are available on request as per MOQ. Logo stamping is possible in Group I & II.



Soft Grey
Grain



Dark Brown
Grain



Natural Light
Brown Grain

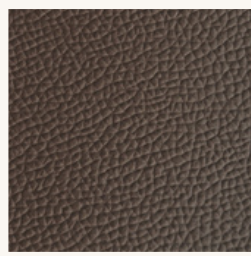
COLOR OPTIONS

**Actual product color may slightly vary from the images shown*

Group I - Grain finish (customized logo possible)



Elephant
Grey Plain

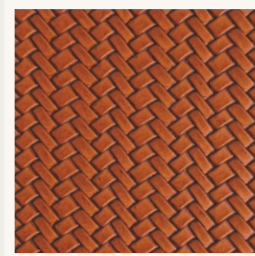


Dark Brown
Plain



Natural Light
Brown Grain

Group III - Woven finish (logo not possible)



Metal
Woven



Silver
Woven

Group II - Plain finish (customized logo possible)



Olive Green
Plain



Teakwood
Plain



Elephant
Grey Plain



Ivory Blue
Plain



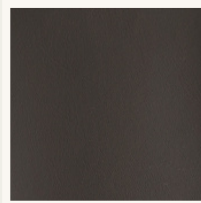
Pale Purple
Plain



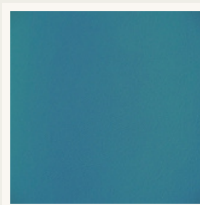
Raven Black
Plain



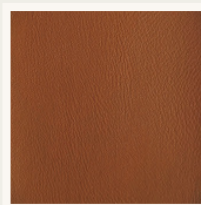
Dazzle
Pink Plain



Deep Brown
Plain



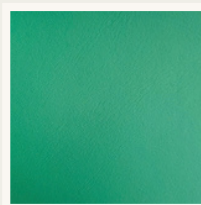
Aqua Blue
Plain



Smooth
Tan Plain

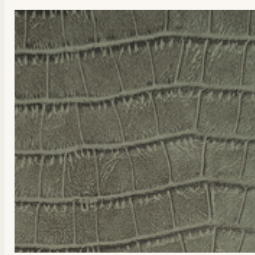


Elephant
Grey Plain



Pine Blue
Plain

Group IV - Croco skin finish (logo not possible)



Charcoal
Crocodile



Clover Green
Crocodile



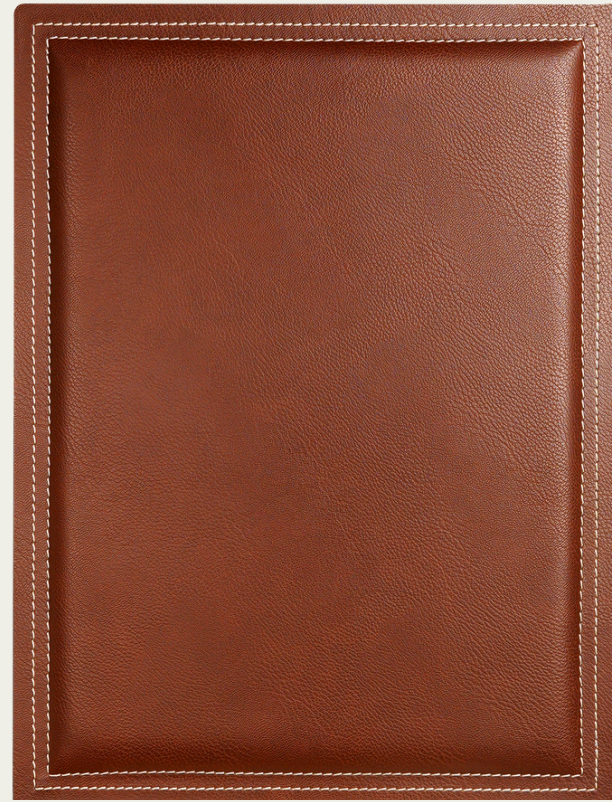
Mocha
Crocodile



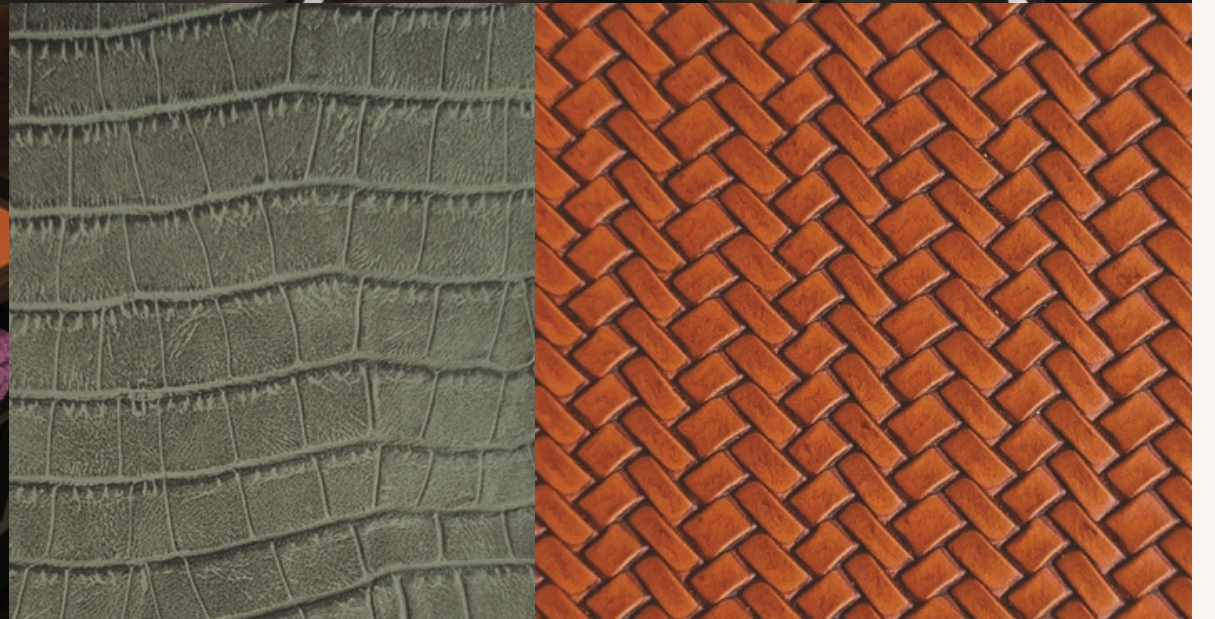
TO BE NOTED:

- 1) The fronts are not to be cleaned with excess water, also excess dust shouldn't accumulate on the surface. Make sure any sharp objects doesn't cut through the leather.
- 2) Lead time: 4-6 months, earliest 1-2 month depending on the possibility of air-freight





Tailored to your desires: provide us with a sample or reference, and we'll seek out materials that suit your vision. Your dreams guide us, and we bring them to life.



Thank you!

Mansi Makadia
mansi@estheteak.com
+1 (437) 366 - 6583



www.estheteak.com