

Perfectly coordinated
living area

Intelligently planned
utility room



Nolte **LIVING**

nolte[®]
KÜCHEN

More than kitchens.

Recent years have seen a noticeable change in the home environment: away from separate areas towards open-plan design with fluid transitions. Nolte Küchen and Nolte LIVING give you all the options for turning your home into a perfectly furnished haven of well-being.

Another important space is close to our hearts – the utility room. Intelligently planned, it not only provides additional storage space but also helps you organise your household.

The following pages show you a whole host of ideas and suggestions that go beyond your kitchen!





IMPERFECTLY
PERFECT

MANHATTAN Oak graphite silver

Home
becomes office.







LUCCA Cement sapphire grey

Perfect transition
to the living and dining area.







ARTWOOD Walnut Cuba

Open relationship –
kitchen and living space.

ARTWOOD Walnut Cuba

A space for the
whole family to live in.







ARTWOOD Walnut Cuba

Classic look in a modern combination.

ARTWOOD walnut cuba not only looks great in the kitchen, it gives the living room a homely, warm atmosphere too. MANHATTAN UNI white creates a contrast between light and dark surfaces that not only says harmony but also excites.



In terms of visual appeal, create the perfect transition from the kitchen to the living room.



Ample storage and practical standing surface: this lowboard not only gives your television set enough space.

ARTWOOD Natural bough oak

Naturally a **lovely eye-catcher.**

Available living space – particularly in urban environments and high-density areas – is becoming ever scarcer. As a result, the various parts of the home are merging on an ever increasing scale. As in this case: the open-plan kitchen here continues on directly into the living area.

This makes it all the more important for spaces to be coordinated in matching style – incredibly easy with Nolte LIVING!



ARTWOOD natural bough oak gives you the same decor in both living area and kitchen, all complemented by an elegant display unit solution.







NOVA LACK High-gloss deep blue

Cuts a great figure
in the hallway too.

Nolte LIVING, of course, lets you feature the same high-quality materials you use in your kitchen: from arctic white to quartz grey and deep blue, the classy NOVA LACK genuine high-gloss lacquer front turns every piece of furniture into a stunning highlight. This kitchen too has been finished in genuine real lacquer from the ALPHA LACK range, but without handles.

MANHATTAN Oak nero

Ideas for all **dream living spaces.**

Living room, library or both? Meeting every preference and expectation, Nolte LIVING lets you design your home in exactly the way you want. Needless to say, you've no need to compromise on anything in your kitchen that demonstrates tasteful style: be it open shelves lit from the side or a sideboard with illuminated recessed finger pull profile. Modern LED technology produces a gentle light that can also be matched to the particular mood or time of day all very easily by remote control or mobile phone app.





A tall, dark red cabinet with a modern design. The upper section consists of two columns of open shelves, each with three shelves. The lower section features two large, solid doors and a small drawer with a dark handle. The cabinet is illuminated from within, highlighting the books and decorative objects on the shelves.

A black shelving unit with five shelves, arranged in a stepped fashion. The shelves are decorated with various items, including black cylindrical containers, a large red ceramic vase, and several smaller brown ceramic vases and pots. A black floor lamp is positioned to the right of the shelving unit.

A dark grey or black sofa with a textured orange cushion. A small black coffee table is positioned in front of the sofa, holding a small orange tray with a cup and saucer.

A black coffee table with a curved top and thin legs. On the table, there is a white book, a small brown ceramic vase with a dried plant, and a small white object.

TAVOLA Oak pinot

Furniture *as individual* **as your home.**

From glass display units in on-trend black to a solution for the television and an individual-style room divider around your sofa-scape: Nolte LIVING gives you all the options for designing your entire home from one and the same mould.



Tailored to your needs and situation,
furniture for all parts of the home.

Exuding warmth and homeliness, the
surface in TAVOLA oak pinot creates
an exciting contrast to the SOFT LACK
platinum grey soft mat fronts.







WINDSOR LACK Henna red

Modern country style **not only in the kitchen.**

Characteristic style elements from kitchen to living room – this sideboard in WINDSOR LACK henna red shows there's no reason why modern country style has to stop at the kitchen.

With Nolte LIVING, you can easily take this lifestyle to the living room or dining room.





FLOOR-STANDING

Our line-up either lets you design floor-standing solutions ...

WALL-MOUNTED

... or, by way of alternative, ones off the floor too. The choice is yours!



Plan to your heart's content.

You can always choose from the entire Nolte Küchen product range to plan individually tailored solutions for the living area. The line-up is being extended to include special-purpose furniture which, for example, can also be wall-mounted.

This is where you can find a number of planning examples illustrating some of the options you have. These are representative of an almost infinite number of possible combinations and configuration options.

You will find a list of all wall-mounted units on the next few pages. All floor-standing cabinet solutions are shown in the "My Kitchen" brochure or online at www.nolte-kuechen.com



Floor-standing cabinetry with pull-out units, wall units and open shelf units, dimension 300 cm.



Wall-mounted cabinetry with pull-out units, wall units and open shelf units, dimension 420 cm.



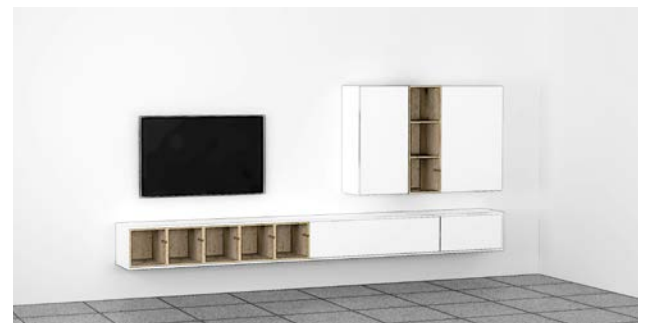
Wall-mounted cabinetry with pull-out units, wall units and CUBE open shelf units, dimension 360 cm.



Wall-mounted cabinetry with base units, pull-out units and wall units, dimension 280 cm.



Wall-mounted cabinetry with base units, pull-out units and wall units, dimension 300 cm.



Wall-mounted cabinetry with pull-out units, wall units and open shelf units, dimension 270 cm.

Wall mounted base units

Make the most of the vast range of available options when planning with Nolte LIVING: besides the entire Nolte Küchen product range, you can choose from the following wall-mounted base units.

HEIGHT 30 cm:



PULLOUT UNIT

wall-mounted | 1 pullout

UAK

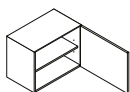
↔ 30/40/45/50/60/80/90/100/120

↑ 30

↘ 50/39



HEIGHT 45 cm:



BASE UNIT

wall-mounted | 1 door, 1 loose shelf

UDD

↔ 30/40/45/50/60

↑ 45

↘ 50/39



PULLOUT UNIT

wall-mounted | 1 pullout

UAK

↔ 30/40/45/50/60/80/90/100/120

↑ 45

↘ 50/39



BASE UNIT

wall-mounted | 1 open compartment, 1 drawer

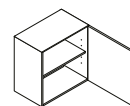
USO

↔ 30/40/45/50/60

↑ 45

↘ 50/39

HEIGHT 60 cm:



BASE UNIT

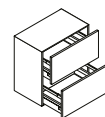
wall-mounted | 1 door, 1 loose shelf

UDD

↔ 30/40/45/50/60

↑ 60

↘ 50/39



PULLOUT UNIT

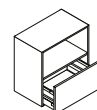
wall-mounted | 2 pullouts

UAZ

↔ 30/40/45/50/60/80/90/100/120

↑ 60

↘ 50/39



PULLOUT UNIT

wall-mounted | 1 open compartment, 1 drawer

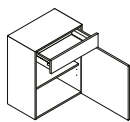
UAO

↔ 30/40/45/50/60

↑ 60

↘ 50/39

HEIGHT 75 cm:



BASE UNIT

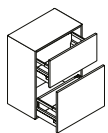
wall-mounted | 1 drawer, 1 door, 1 loose shelf

U

↔ 30/40/45/50/60

↓ 75

↙ 39



PULLOUT UNIT

wall-mounted | 2 pullouts

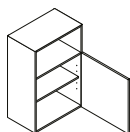
UZ

↔ 30/40/45/50/60

↓ 75

↙ 39

HEIGHT 90 cm:



BASE UNIT

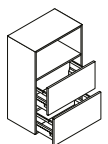
wall-mounted | 1 open compartment, 1 door, 1 loose shelf

UTO

↔ 30/40/45/50/60

↓ 90

↙ 39



PULLOUT UNIT

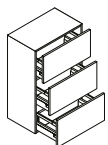
wall-mounted | 1 open compartment, 2 pullouts

UAZO

↔ 30/40/45/50/60

↓ 90

↙ 39



PULLOUT UNIT

wall-mounted | 3 pullouts

UAZ

↔ 30/40/45/50/60

↓ 90

↙ 39



Information on all other living-space and kitchen options is provided in the "My Kitchen" brochure or online at www.nolte-kuechen.com



ACCESSORIES



PLINTH FOOT SOF - S40

Alternative to plinth panel

Height 4 cm, adjustment range +1,5 cm / - 0

Stainless steel look

black

4ES

4SW



CABLE ENTRY KDL

Die-cast zinc, with cover catch

Height 2,1 cm, outer diameter 6,7 cm, cut-out dimension 6 cm

Stainless steel look

black

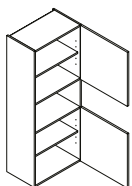
RA2

RA1

Wall mounted tall units

Nolte LIVING tall units not only cut a great figure in the living room. They can also be used anywhere you choose in the dining area or kitchen.

HEIGHT 150 cm:



TALL UNIT

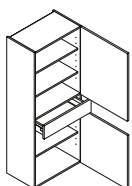
wall-mounted | 2 doors, 2 loose shelves, 1 open compartment

VTO

↔ 30/40/45/50/60

↓ 150

↪ 39



TALL UNIT

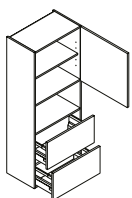
wall-mounted | 2 doors, 3 loose shelves, 1 drawer

VU

↔ 30/40/45/50/60

↓ 150

↪ 39



STALL UNIT

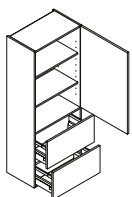
wall-mounted | 1 door, 1 loose shelf, 1 open compartment, 2 pull-outs

VAZO

↔ 30/40/45/50/60

↓ 150

↪ 39



TALL UNIT

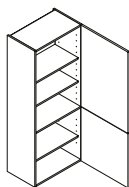
wall-mounted | 1 door, 2 loose shelves, 2 pull-outs

VAZ

↔ 30/40/45/50/60

↓ 150

↪ 39



TALL UNIT

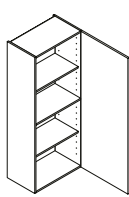
wall-mounted | 2 doors, 1 fixed shelf, 3 loose shelves

VT

↔ 30/40/45/50/60

↓ 150

↪ 39



TALL UNIT

wall-mounted | 1 uninterrupted door, 1 fixed shelf, 2 loose shelves

VDD

↔ 30/40/45/50/60

↓ 150

↪ 39

Information on all other living-space and kitchen options is provided in the "My Kitchen" brochure or online at www.nolte-kuechen.com





A tall, dark red cabinet with a combination of closed doors and open shelving. The top section features three open shelves with integrated lighting, displaying stacks of books and decorative objects. Below the shelves are two large closed doors, a small drawer, and another large closed door. The cabinet is set against a light-colored wall.

A series of dark, floating shelves mounted on a light-colored wall. The shelves are arranged in a stepped fashion and hold various decorative items, including black cylindrical containers, a red ceramic jug, and several vases of different shapes and colors. A floor lamp with a black shade is positioned next to the shelves.

A dark grey sofa with two bright orange cushions. The sofa is positioned in the corner of the room, next to a floor lamp with a black shade. A small, round, black side table is placed next to the sofa.

A small, round, black coffee table with a white top. On the table are two vases, one dark brown and one light beige, and a book. The table is positioned in the foreground, next to a dark rug.

Everything stored **next to the kitchen.**

YOUR INTELLIGENTLY PLANNED AND LOGICALLY FURNISHED UTILITY ROOM

The utility room used to be an integral part of every household. Then it tended to go out of fashion, mainly for reasons of space – after all, living space has become increasingly expensive. But this is precisely why it is being rediscovered – and completely redefined: a utility room not only perfectly complements modern, design-focused kitchens, it gives the entire household a clearer and more practically organised structure.







Everything



In a well-planned utility room, there's the right place for everything.



YOUR HOUSEHOLD FROM
A WHOLE NEW PERSPECTIVE

in perfect order.

SIMPLY MORE SPACE
FOR PROVISIONS,
LAUNDRY, CLOTHING ...

Efficiently concentrated, it provides a place for everything that is important and necessary for everyday housekeeping. From washing machine, tumble dryer, ironing board, provisions, cleaning products and equipment to coat rack, beverage crates and recycling system.

This way, a utility room eases strain on the rest of available living space. And creates space for what's important: living in a relaxed home environment and enjoying life.



Everything has its place –
even in the smallest of spaces.



PERFECTLY PLANNED FOR ALL THE THINGS YOU NEED EVERY DAY:

- 1 WASHING MACHINE & TUMBLE DRYER
- 2 LAUNDRY
- 3 BOTTLES AND CRATES
- 4 HOUSEHOLD EQUIPMENT
- 5 CLOTHING
- 6 SORTING WASTE
- 7 PROVISIONS AND STORAGE

WELL-ORGANISED FOR A GOOD LIFE

When planning and furnishing your utility room, there are two main questions to address: What do I need – and where do I need it? The answers are then quickly found using our versatile solutions. Functionality, ergonomics and storage capacity are intelligently combined in a way that makes all areas a well-balanced unit. Because this simply makes everything so much easier – whether doing the washing, ironing, putting away the shopping, getting changed after work, collecting deposit bottles and waste glass or whatever else you need to get done in your household. This is where the possibilities are as individual and flexible as your wishes.

The many different options are described in detail on the next few pages.

Everything in view.

TIP: SORTING WASHING CORRECTLY

Don't sort worn clothes in just one laundry basket but use several baskets for pre-sorting – e.g. into light, coloured, sensitive and 60° or 95° washing.



WASHING MACHINE TUMBLE DRYER IN EASY REACH

Everything completely relaxed. These appliances too in the utility room are positioned at an ergonomic height. A number of practical solutions are also available, such as the drawer for the laundry basket which eliminates the bother of having to bend down and helps to take some of the effort out of housekeeping.



SORTING AND PLANNING THE WASHING MORE EASILY

The laundry sorting unit with its drawers sorts washing into coloured, white and 95°-wash items almost automatically – even when closed thanks to the practical openings in the front.



KEEPING BEVERAGES IN EASY REACH

The larder unit for beverages keeps everything in immediate reach because the various crates are clearly set out and open. This way, you can take out bottles and put empties back without having to juggle around with crates.



CLEAN, NEAT AND TIDY

Various holders in the broom cupboard ensure that everything is kept in the right place – letting you put your hand on whichever household appliance you happen to need. And also everything else you need for cleaning, sweeping, ironing or vacuuming.



GENEROUSLY SIZED HANGING CUBICLE

Can take a lot: a coat rack integrated in the utility room, for example, lends itself to storing work clothes. A neat solution. Particularly when clothes are dirty. There's also plenty of space here for your summer or winter clothing when it's not needed.



MULTI-SORTED

The practical pull-out systems come with ample space for cleanly and accurately sorting waste – providing the ideal basis for successful recycling and sustainable housekeeping.

Everything nice and fresh after it's washed and dried.

INTEGRATING WASHING MACHINES AND TUMBLE DRYERS

The appliance housing base units lift your appliances to the optimum ergonomic work height.

LAUNDRY SORTING UNIT:

Simply stand it exactly where laundry is washed and dried. 3 pull-outs complete with laundry sorting baskets.

VWS

↔ 60
↓ 195/210/225
↙ 60

Also available without baskets.



WALL UNIT:

Utilise the space above the machine for storing detergents, stain remover etc.

H
60 ↔
30/45/60/75/90 ↓
60 ↙

APPLIANCE HOUSING BASE UNIT:

For washing machine or dryer.
1 pullout with laundry sorting basket.

GGWA 60-46-A

↔ 60
↓ 45
↙ 60

Also available without basket.



APPLIANCE HOUSING BASE UNIT:

For washing machine or dryer.
1 drawer, 1 pullout.

GGWA 60-46-SA

60 ↔
45 ↓
60 ↙



MORE THAN A
NEAT SOLUTION



TIP: GETTING MOULD STAINS OUT

Putting garments and other textiles away in a poorly ventilated place while they are still damp can result in mould stains. To remove them, simply soak the affected areas in buttermilk and then machine-wash in the normal way.



THIS IS WHERE YOU SAVE SPACE AND TIME EVERY DAY

Our sorting solutions make it easy for you to minimize the time taken to do your washing – with maximum effect. Because everything is arranged and designed to let you reach your target as quickly with a little work as possible: clean laundry.

Everything neatly in its place.



TIP ON SORTING WASTE:

Yogurt pots don't need to be rinsed out before disposing of them in recyclable waste. The water used adversely affects the ecological balance, and plastics are cleaned anyway before they are recycled.

PROVISIONS, CLEANING PRODUCTS AND DOMESTIC APPLIANCES



TAMBOURDOOR UNIT:

Provisions of every kind always in easy reach.

HAJ

↔ 50/60/80/90

↓ 115/130/145

↘ 35/45



BROOM CUPBOARD:

Storing ironing board, vacuum cleaner and step ladder safely and saving space at the same time.

VB

↔ 30/40/45/50/60

↓ 195/210/225

↘ 45/60

HBT

Mount for ironing board or step ladder.

PRACTICAL WASTE SORTING



Systematically sort and prepare waste and recyclables for proper recycling.

SINK BASE UNIT:

With waste-sorting system.

SABD

↔ 45/50/60

↓ 75

↶ 60

PULLOUT UNIT:

With container for recyclable-waste bag.

UWSD

↔ 30

↓ 75

↶ 60

CLEAR STRUCTURE IN STORING BOTTLES AND CRATES



BEVERAGE CRATE UNIT:

Clearly organised storage and easy access to all beverages.

VGL

↔ 60

↓ 195/210/225

↶ 60



PULLOUT UNIT WITH BOTTLE BASKET:

UAID

↔ 30

↓ 75

↶ 60

Everything ready to put on.

HALLWAY UNIT:

Place for keeping work and everyday clothing.

VG Hallway

↔ 45/50/60
↓ 195/210/225
↙ 60

VGA Hallway unit with interior pullout

↔ 45/50/60
↓ 195/210/225
↙ 60



Practical internal pull-out – the ideal way to store smaller-type garments, such as gloves, scarves and hats, so they are always in easy reach.



ATTRACTIVE,
NEAT AND TIDY

SHOE CUPBOARD:

Plenty of space for shoes – on the shelves and the shoe holders, each for 2 pairs of shoes on the inside of the door.

VSL

↔ 60
↓ 195/210/225
↙ 60



ORGANISATION THAT MAKES SENSE



TIP: REMOVING SHOE ODOUR

Sprinkle a little baking powder or baking soda in the shoes affected and let it work overnight, then tap it out thoroughly. Cat litter, if used in the household, also binds odours – the best way to use it is to fill some into a small fabric pouch and place it in the shoe.

MUTUAL PLEASURE

There are many advantages in using the utility room as an intermediate area for getting changed: dirty sports or work clothing immediately lands in the correct laundry baskets, outdoor footwear is kept out of living areas and everyday work clothes are waiting for every member of the household in one place.

Everything goes –
whatever the space.





SO, WHAT SORT OF UTILITY ROOM WOULD YOU LIKE TO HAVE?

This, of course, depends entirely on the space you have and on your personal needs. Some prefer to use it as a storage room for household items, others turn it into a lovely dressing room with numerous drawers providing plenty of space. Just as you please.



PLACE FOR SOCKS, LAUNDRY AND THE LIKE

Quickly put away and neatly stored: the generously sized drawers give you immediate access to many small items of clothing, such as socks, underwear and swimwear. This brings systematic organisation to your wardrobes.

TWO ROLLED INTO ONE

Create the perfect room divider: on the one hand a practical utility room with everything that goes with it, and, on the other hand, an attractive hallway area with coat rack and wall unit as a chest of drawers – where keys can be kept, for example.



Everything divided up
into separate areas.



Everything cleverly stored away **in the smallest of spaces.**

CLEARLY ORGANISED

You only have a few square metres?
Not a problem. With a couple of
clever solutions, even a small utility
room can make a big splash.
One recommendation here, for example,
would be a space-saving laundry
base unit – a practical alternative
to the laundry sorting unit.



LAUNDRY BASE UNIT:

1 drawer,
1 pullout with 2 laundry baskets.

UWL 60

↔ 60

↓ 75

↙ 60



VIDEO:

Discover exciting home stories with all sorts of tips and tricks from delighted owners of Nolte kitchens and utility rooms.



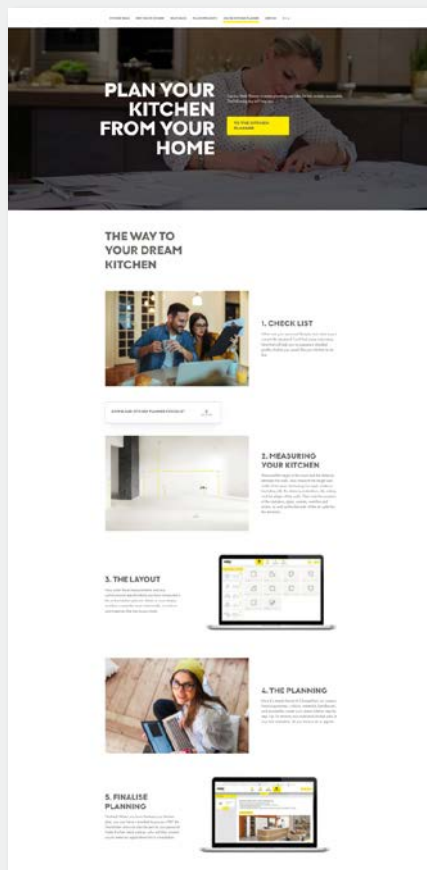
Carry on browsing.



Plan your kitchen
from the comfort of
your home with our
online kitchen planner!



Everything for
planning your
perfect kitchen!



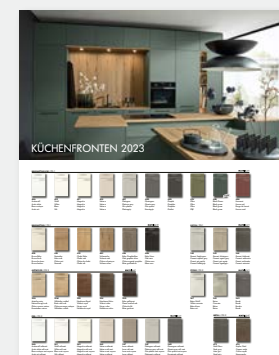
All information for planning
the perfect kitchen.



The fastest way to perfect
organisation in the kitchen.



The Nolte Küchen Journal –
be inspired!



Overview of our fronts,
colours and decor finishes.



The kitchen is the room of rooms.
We probably *live* more,
and more *intensively*,
here than anywhere else in the home.
It is the place where
we meet, where we encounter others.
As family or friends.
As a couple.
We *cook, eat* and *enjoy* ourselves
in the kitchen. And sometimes we have
all the time in the world as we do so.
We argue. And *make up again*.
We read, write, send emails, post messages.
And maybe philosophise a little.
And – quite secretly – the kitchen sets
the rhythm of our day.
Good morning. Then midday. Then evening.
And sometimes night ...
Which is *why we love* the kitchen.

Living in the kitchen. nolte

nolte[®]
KÜCHEN

Nolte Küchen GmbH & Co. KG | Anni-Nolte-Straße 4 | 32584 Löhne | www.nolte-kuechen.com

VF-LIVING-GB

Subject to technical change without notice. Colour shades in this catalogue may sometimes vary slightly from original colours for printing and photographic reasons.

