

LIVING IN THE KITCHEN

International projects



Worldwide at home ...

With best wishes

Presented by



Foreword

NOLTE KÜCHEN

Nolte Küchen is a german family company that has been in existence for over 60 years, and is now in the fourth generation. During this time, not only has the company continued to grow to become one of the most important brand manufacturers of fitted kitchens, but there have also been numerous innovations that have subsequently become the industry standard.



The experience and competence of our more than 1200 employees is a key factor in our success.

The kitchen is more than a business to us: it is our passion, and one that we cherish and develop every day anew. With our experience in international projects, we know we are the right partner for your ideas.

You can be sure we will always have the right solution for you, for any budget, and room size and any design requirements. Challenge us – we look forward to your project!

GEORG KONRAD NOLTE
MAREN SCHMITT-NOLTE
GEORG NOLTE

Around the Kitchenworld	26
United Kingdom	34
Spain	50
Turkey	66
Russia	82
America	90
Middle East	102
India	132
Asia	148

850

kitchens are sent out all over the world daily



ECKHARD WEFING
Managing Director

MANFRED WIPPERMANN
Managing Director

MARC HOGREBE
Managing Director

Over the years, Nolte Küchen has become a sought-after supplier to the international project business. Today, we export to more than 60 countries all over the world and manufacture over 1.6 million kitchen cabinets a year. Many international projects have already been fitted with kitchens from Löhne, and our customers appreciate our flexibility in project management and excellent design and manufacturing quality every bit as much as our competence in customised solutions. You too can benefit from our international expertise as the foundation for your plans.



QUALITY SPEAKS FOR ITSELF

Quality is often not apparent at first sight but hidden in the details. They make all the difference between a kitchen and a Nolte kitchen. But what really counts is the individual: our ideas and requirements change. And with them, our kitchens. They keep pace with growing expectations. What's more: they meet tomorrow's demands even today. But these things you can be sure of at Nolte Küchen: perfect quality and perfect manufacture down to the tiniest detail, whether you are managing a major international project or planning the kitchen for your own home.



Quality made in *Germany*



We live *Responsibility*

For years, sustainability and resource-saving, environmentally-aware action have been our declared corporate goal. We are constantly working on optimising the ecological balance of our entire process chain. From minimising the emissions of harmful substances and the use of environmentally-friendly, recyclable materials to resource-saving deliveries, ecology is at the heart of everything we do. Our environmental commitment has also received official recognition – in the form of certifications and test seals in every important area.



Meet us,

wherever **you** are.

OUR PROJECTS | KITCHENS

Germany

Studentenwohnheim | Münster | **101**
Münzberg Office Tower | Hamburg | **16**
Studentenwohnheim | Dresden | **390**
The Henry's | Düsseldorf | **65**
Tower 185 | Frankfurt | **56**

- 1 Briarswood | Colwyn Heights | **6**
- 2 Bollin Park | Wilmslow | **105**
- 3 Nine Elms Point | London | **605**
- 4 SNC Le Quai Victor | Tours | **113**

- 5 Studentstay | Leeurwarden | **25**
- 6 Hvidbjerg | Blåvand | **49**
- 7 Bjeredsparken | Malmö | **25**
- 8 Jardim da Meia Praia | Lagos | **355**
- 9 TORRE VILANA II | Barcelona | **60**
Midtown Apartment | Barcelona | **30**
- 10 Villars-sur-Glâne A1-02 | Villars-sur-Glâne | **32**
- 11 Lustica Bay | Tivat | **168**
- 12 Aspen Suites | Bansko | **25**
- 13 Valle Lacus | Istanbul | **44**
Seba Vista | Istanbul | **64**

- Exen | Istanbul | **547**
Park Village | Istanbul | **144**
- 14 Barkli | Moscow | **154**
- 15 Hilltop Residence | Beirut | **66**
- 16 Basma B | Kuwait City | **36**
- 17 Kazerooni Compound Saar | Manama | **130**
- 18 Adil Trading Villas | Doha | **40**
- 19 Burj al Salam | Dubai | **180**
Ontario Tower | Dubai | **285**
- 20 The Wave | Muscat | **3900**
- 21 Rafal Residence Project | Riyadh | **421**

- 22 Rocco Forte | Jeddah | **99**
- 23 Sunrise Project | Abuja | **37**
- 24 Sandy Lane | Accra | **16**
- 25 Jardins Abghour | Marrakesh | **107**
- 26 The Cliffs | Johannesburg | **5**
- 27 Janpath Colony Project | Ludhiana | **10**
- 28 Golf Estate | Delhi | **504**
- 29 Luxuria Priva Project | Mumbai | **225**
- 30 Golf Edge | Hyderabad | **467**
- 31 Embassy Grove Villa Project | Bangalore | **106**
- 32 Seven Sense | Colombo | **74**

- 33 Maafushivaru Villa Project | Male | **50**
Kuramathi Villa Project | Male | **151**
- 34 The Chinese Imperial Seal Ya Lin Dong | Peking | **420**
Park 1872 | Peking | **251**
- 35 Yang Yang Golf Residence | Seoul | **132**
Golf Resort | Seoul | **132**
Camus Mockup | Seoul | **136**
- 36 Star River Pudong | Shanghai | **274**
Huamu | Shanghai | **705**
- 37 Quintang Impression | Hangzhou | **424**
Huajiachi | Hangzhou | **996**

- 38 The Bentley Bay | Miami | **170**
Water Club North Palm Beach | Miami | **221**
ONE | Florida | **453**
VUE Sarasota Bay | Florida | **308**
- 39 Ocean Club Estate | Nassau | **66**

Find our projects
on our website:
www.nolte-projects.com

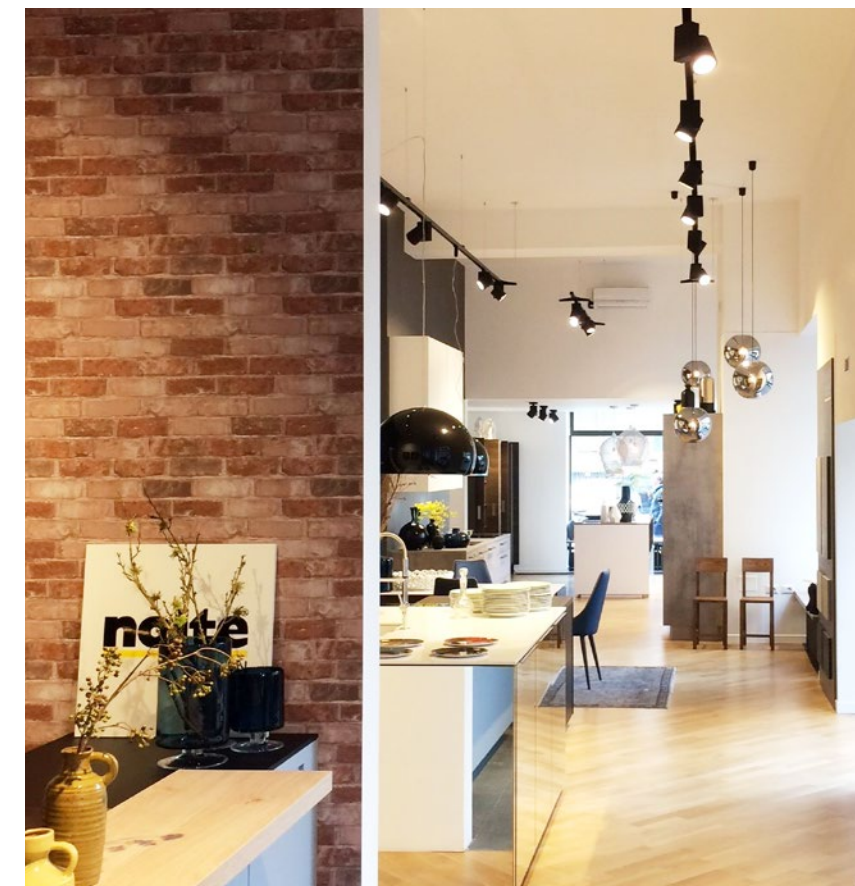




nolte[®]
KÜCHEN

Mailand

In April 2017, Nolte Küchen opened an exclusive showroom at the heart of Milan. It displays the variety of the company's products and its wealth of planning options. The approx. 200 m² display area illustrates how flexible architects can be when planning with Nolte Küchen.



A total of 9 kitchens are on display on almost 300m² in the showroom in Westminster. Nolte Küchen offers property developers, architects and customers the chance to see for themselves the variety of kitchen designs and services. The showroom in London enables customers to feel as well as to see the quality standard of Nolte Küchen.





nolte[®]
KÜCHEN

New York

2018 Nolte Küchen joined the ranks of renowned kitchen manufacturers who are represented in the „Architects & Designers Building“ in New York. The prestigious showroom in Manhattan covers an area of approx. 180 m² and, with a total of six kitchens, is the perfect centre for good advice and inspiration for designers, architects and property developers.



Competence centre *Nolte FZE*

Around

20.000 *kitchens delivered*



NOLTE COMPETENCE WORLDWIDE



R. Selva Kumar

As part of Nolte's international business development strategy Nolte FZE was launched in Dubai, as the central hub responsible for distributing Nolte Group products in the wider MENA and SEA region.

nolte[®]
FZE

Vision

To become the leading interior solutions provider in the Middle East, Africa and South-East Asia, satisfying any aesthetic and budget requirements through our holistic approach, empowered by the strength and support of our partners in the region.

Mission

To provide a wide portfolio of German made kitchen, bedroom and living room furniture positioned from premium to commercial range of eco-friendly products that are manufactured with the highest quality standards, ensuring that the design & functionality are always met.



Having supplied some 20,000 kitchens, Nolte Küchen has a market share of 20 % in the Near East, Africa, India and south-east Asia. Here too, you can rely on our international competence, which is ensured by our 16 employees. As the market leader in the project sector, we represent competent support for our partners and showrooms as well as close collaborations with architects, designers and project developers and always guarantee the perfect solution.

Competence centre Asia

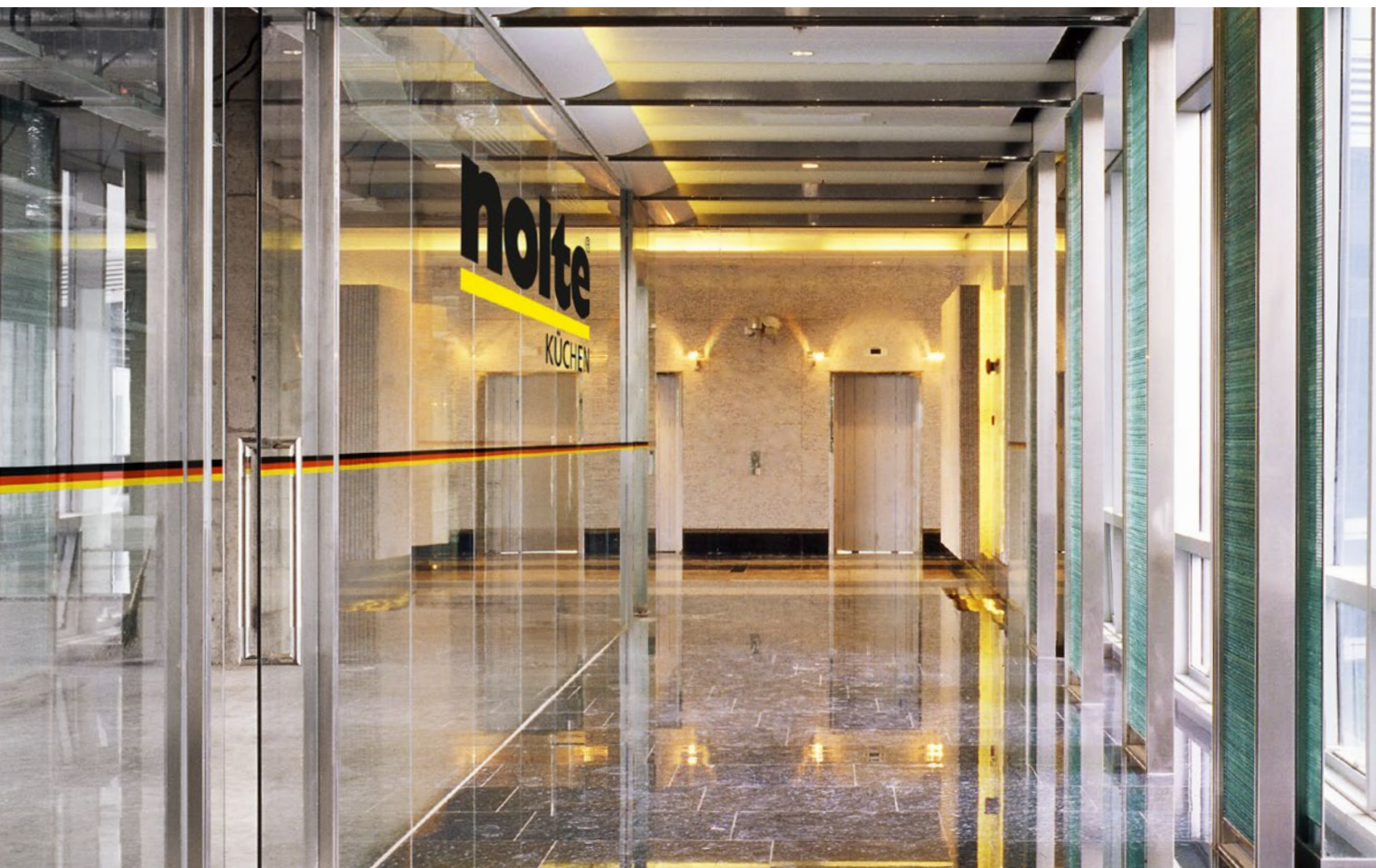


LOCAL PRESENCE AS THE RECIPE FOR SUCCESS

In order to be successful on the challenging Asian market, it is not enough to offer exclusive products and innovative expertise. Of at least equal importance are having a local presence and contacts, and first-hand experience and information. Nolte Küchen has therefore opened a further competence centre in Shanghai to offer customers a professional local service.



Tatjana Noureddine



A piece of Germany in Shanghai

The German Centre Shanghai in the Zhangjiang Hi-Tech Park is part of a worldwide network of German representations. This is where Nolte Küchen has its Chinese subsidiary, and where it lives the principle of closeness to the customer in the Far East, the market of the future, in an atmosphere that constantly encourages and fosters the creation of bilateral business contacts.

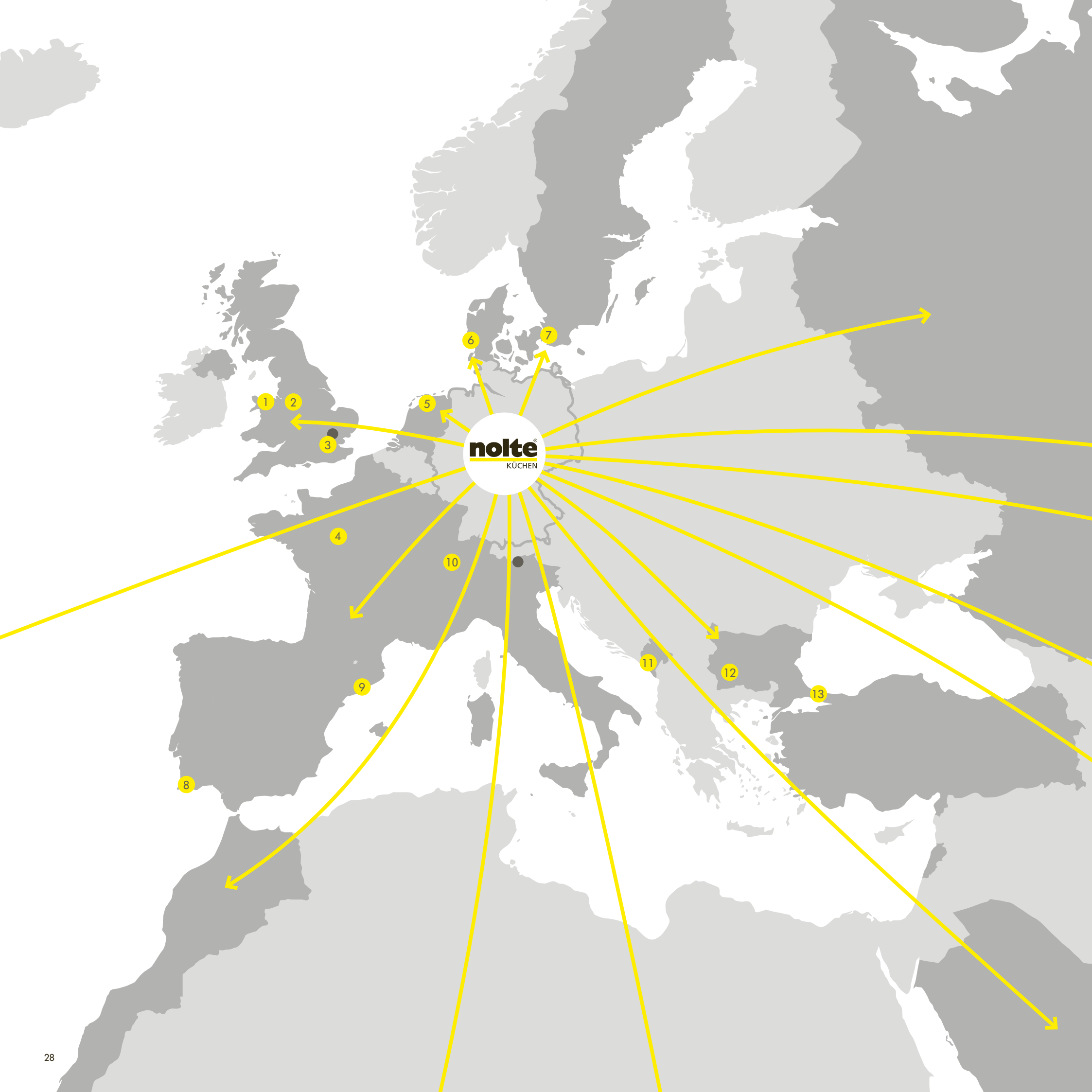




UNITED KINGDOM
SPAIN
DUBAI
CHINA
INDIA
RUSSIA
USA
TURKEY

AROUND THE KITCHENWORLD

Although there may be vast differences in the various countries on all the continents, there is one thing that always stays the same: our quality standard. As a reliable partner for your international projects, we provide our competence and experience for you anywhere in the world. Whether you are planning a project, we will offer you individual solutions at an appealing price/performance ratio, perfect processing, competence service and comprehensive warranty services.



European

living

Germany

Studentenwohnheim | Münster | **101**
Münzberg Office Tower | Hamburg | **16**
Studentenwohnheim | Dresden | **390**
The Henry's | Düsseldorf | **65**
Tower 185 | Frankfurt | **56**

Showroom

● Mailand
● London

1 Briarswood | Colwyn Heights | **6**
2 Bollin Park | Wilmslow | **105**
3 Nine Elms Point | London | **605**
4 SNC Le Quai Victor | Tours | **113**
5 Studentstay | Leeurwarden | **25**
6 Hvidbjerg | Blåvand | **49**
7 Bjerredsparken | Malmö | **25**
8 Jardim da Meia Praia | Lagos | **355**
9 TORRE VILANA II | Barcelona | **60**
Midtown Apartment | Barcelona | **30**
10 Villars-sur-Glâne A1-02 | Villars-sur-Glâne | **32**
11 Lustica Bay | Tivat | **168**
12 Aspen Suites | Bansko | **25**
13 Valle Lacus | Istanbul | **44**
Seba Vista | Istanbul | **64**
Exen | Istanbul | **547**
Park Village | Istanbul | **144**

TOWER 185

LOCATION: **FRANKFURT**
NUMBER OF KITCHENS: **56**





56

office kitchens

KITCHEN: FEEL

In this modern office complex, Nolte Küchen impressively demonstrates that we are not only the perfect partner for domestic kitchens, but that we can also customise solutions for offices with tea kitchens.



UNITED KINGDOM

Some local
Bites ...

London, the multicultural capital of England and the United Kingdom with a population of 8.8 million, where the traditional meets the modern, also boasts an impressive mix of culture and vibrancy. The overwhelming variety ranges from cultural monuments such as Westminster Cathedral and Tower Bridge to ultra-modern areas such as The Docks.

ARCHITECTURE

London's architecture is rich and varied – modern building complexes stand cheek-by-jowl with historic mansions and renovated apartments. Both „The Shard“, at 310 metres the highest building in the Kingdom, and Buckingham Palace, the most famous one, are in London.



NINE ELMS POINT

PARTNER: BARRAT LONDON
LOCATION: LONDON
ARCHITECT: ROLFE JUDD
NUMBER OF KITCHENS: 605





605

glossy kitchen impressions

KITCHEN: SIGMA LACK

Clear outlines in a timeless, linear design enhanced, for instance, by the handleless doors. This makes the kitchen a place that radiates calm. Its high functionality combined with generous storage options is complemented by exclusive extras.



APARTMENTS RANGING FROM 35-90 M².

A kitchen that fits perfectly in the stylistic project setting – comfortable and with exclusive features such as a wine chiller, compact oven and other details.



BOLLIN PARK

PARTNER: DAVID WILSON HOMES
LOCATION: WILMSLOW
ARCHITECT: RAVENSCROFT DEVELOPMENTS LTD.
NUMBER OF KITCHENS: 105





105

elegant kitchens

KITCHEN: CARISMA LACK

Clearly exclusive: the front in soft mat real lacquer delights with its interesting feel. The handles enhance the elegant look, while the 120 cm wide drawers offer plenty of storage space. A kitchen that is as prestigious as it is functional.

INDIVIDUALITY MEETS OPENNESS.

These kitchens are the heart of the home – and that is also how they have been designed. They blend perfectly with the overall room concept. Not just for cooking in. The seamless transition to the living room is perfect for relaxing, while the seating options encourage gatherings.



Some local *Bites ...*

Spain has a total population of 46.8 million, making it the fourth largest economy in the EU. It has undergone tremendous modernisation in recent decades, as the result of which it is now the trailblazer in fields such as fashion, design and architecture. Even though agriculture and tourism play a key role economically, Spain is increasingly being seen for its vibrant, style-setting metropolises.

SPAIN





ARCHITECTURE

One of the best examples of the cultural change in Spain is the Basque metropolis of Bilbao, which has developed from a harbour town with a distinctly industrial character to a Mecca of modern art and culture. The undisputed highlight is the postmodern Guggenheim Museum, built by star architect Frank Gehry, the design and conception of which made it a pioneer in architectural computer simulations. Changing exhibitions of contemporary art are held here on a display area of 11,000 m².

TORRE VILANA

PARTNER: NUÑEZ Y NAVARRO
LOCATION: BARCELONA
NUMBER OF KITCHENS: 60





60

spanish kitchen impressions



KITCHEN: VENTA

Spanish temperament meets functional design. Here the kitchen is a space where everyone gathers, and supports the traditionally high importance with which family is regarded. The perfect ambience in an urban setting with southern European influences.

MEDITERRANEAN.

The elegant framed front Venta is also the perfect visual match for the modern, Mediterranean room concept. From the integrated lighting and the generous storage space to the gas hob: a kitchen concept that is full of sophisticated touches.



MIDTOWN APARTMENT

PARTNER: **NUÑEZ Y NAVARRO**
LOCATION: **BARCELONA**
NUMBER OF KITCHENS: **30**





30

kitchens as family meeting places

KITCHEN: **CARISMA LACK / SOFT LACK**

This is where the family gathers: the open design with a transition to the living area is a gathering place with seating for every member of the family. The tasteful fronts in the Nolte Küchen mat lacquer concept are a perfect match for the historic ambience of the building complex. A kitchen that scores with lots of details and intelligent functions.

COLOUR.

Nothing influences the optical impression and atmosphere of a room more than colour. Nolte Küchen's mat lacquer concept is ideal for creating perfectly matching worlds of colour. This means the kitchen is always integrated perfectly and harmoniously in the overall look, yet is still the expression of individuality.





TURKEY

Some local *Bites ...*

Istanbul is the most important city in Turkey, and is situated at the interface between the continents. The metropolis with 15 million inhabitants on the Bosphorus uniquely combines European and oriental influences in a vibrant cultural mix. From stylish designer hotels to the historic bazaar district, it has absolutely everything. Although the trams of the İETT stopped operating in 1966, today they are running again as historic carriages along the main shopping precinct İstiklal Caddesi.

ARCHITECTURE

Turkey's architecture has a thousand years of tradition. Relics from the Eastern Roman Empire meet Ottoman cultural monuments, and represent the constant change that this city is still undergoing today. Modern life has long since arrived here, and the Istanbul of today is a fascinating metropolis, full of contrasts, where tradition is still every bit as much at home as progress is.



EXEN

PARTNER: SUR YUPI
LOCATION: ISTANBUL
NUMBER OF KITCHENS: 547





547

custom-fit kitchen options

KITCHEN: LUX / MANHATTAN

Perfectly connected to the metropolitan infrastructure: in what is probably the best-known construction project on the Bosphorus, apartments of between 36 and 355 m² have been fitted with Nolte Küchen. They were all fitted precisely into the variously sized apartments, with equal attention given both to functionality and looks.



VALLE LACUS

PARTNER: KLK GYO
LOCATION: ISTANBUL
NUMBER OF KITCHENS: 44



44

traditional kitchens with a modern twist

KITCHEN: WINDSOR LACK / NOVA LACK

Bygone charm with modern convenience – the country kitchen WINDSOR LACK fascinates with its traditional character. The white soft mat fronts are combined with typical country-house elements such as the cornices. Worktops in granite and wood decor create a natural appearance.



PARK VILLAGE

PARTNER: ARIKAN YAPI
LOCATION: ISTANBUL
NUMBER OF KITCHENS: 144





144

luxurious residences

KITCHEN: LUX

Luxurious villas have been built on a total area of 312,000 m² that consists of 86 % landscaping. The lavishly fitted kitchens are modern interpretations of traditional styles. The high-gloss front and worktop in wood decor enhance the overall idea of luxury, as do the exclusive, generously built-in electrical appliances.

Some local
Bites ...



RUSSIA

QUESTION: What are the typical characteristics of the architecture in Russia?

Ms. Malinovskaya:
Architecture in Russia is currently undergoing a process of self-discovery. As yet, there is no typically Russian style – European and American trends are used instead. It will take us another 10 to 15 years to develop our own architecture.



Elena Malinovskaya,
Nolte Küchen Export-Partner Moscow



ARCHITECTURE

QUESTION: *How has architecture changed in Russia in recent years?*

E. Malinovskaya:

Today, the concept of new buildings is increasingly shaped by new technologies and building materials. Houses are being built taller than in previous decades, and having a more diversified infrastructure in the surrounding area such as schools, hospitals, parks and sporting facilities is now more important. In some areas, private homes account for only one-third of the buildings.

QUESTION: *What challenges will developers face in the future?*

E. Malinovskaya:

A comprehensive programme of refurbishment has been issued in Russia. This means that old houses are to be torn down and replaced with modern new residential units. All the residents will do is change where they live. The challenge that the developers are facing is not only to build these homes, but also to create the space for a productive life.

BARKLI

PARTNER: ROBERT A.M. STERN ARCHITECTS
LOCATION: MOSCOW
NUMBER OF KITCHENS: 154





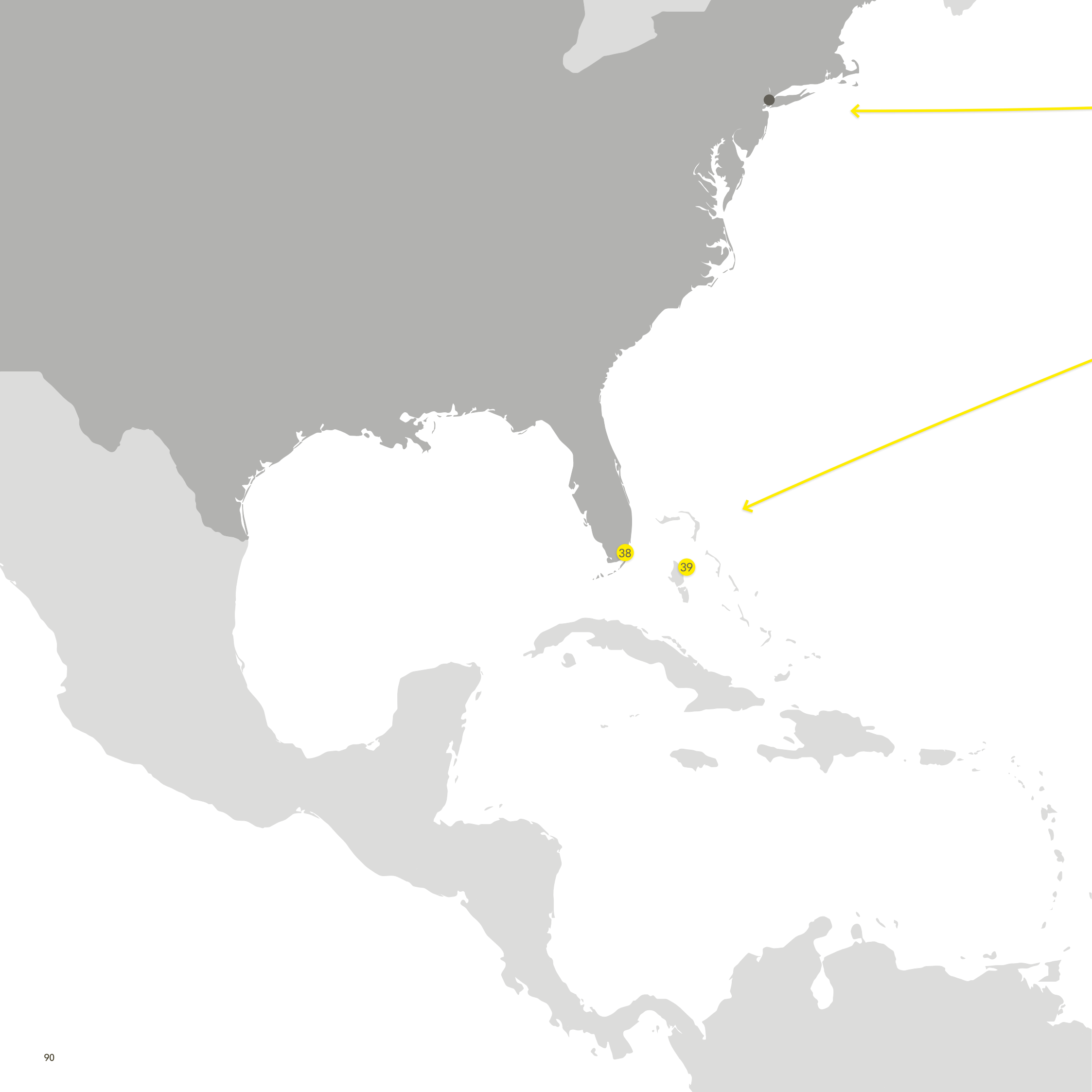
154

functional kitchen challenges



KITCHEN: FRAME LACK / LUX

A residential complex with adjoining sports centre of the Moscow Sports Committee was built on the outskirts of historic Ekaterininsky Park. The kitchens are sturdy and functional, and offer generous storage options on a small area. Despite that, they radiate a touch of luxury and elegance.



American living

- 38** The Bentley Bay | Miami | **170**
Water Club North Palm Beach | Miami | **221**
ONE | Florida | **453**
VUE Sarasota Bay | Florida | **308**
- 39** Ocean Club Estate | Nassau | **66**

Showroom

- New York



AMERICA

Some local *Bites ...*

Even though the USA has existed in its present form for almost 250 years now, it has never quite managed to lose its character of a country of immigration. Nowhere else in the world would you encounter such a variety of cultures, styles and mentalities as in America's cities. On the other hand, the country is very much shaped by the contrast between its rural and urban regions – this is where the worlds meet, even collide. And yet the idea of a cultural melting-pot still exists, probably most strongly embodied by the country's biggest city – New York.

ARCHITECTURE

New York is the city of constant renewal – not least architecturally. A constantly changing skyline with historic monuments from over a hundred years of architectural history gives this metropolis on the Hudson River its fascinating character. The world's most renowned architects have left their marks here and created a unique mix of superlatives that attracts people from all over the world.



WATER CLUB PALM BEACH

LOCATION: FLORIDA
NUMBER OF KITCHENS: 221



221

kitchens with sea views

KITCHEN: MANHATTAN / LUX

Clear shapes, generous dimensions: three architecturally striking residential towers and 20 luxurious villas have been created along the picturesque waterside promenade. Depending on the apartment, the kitchens were given the MANHATTAN wood decor front or the high-gloss LUX front in the matching colour combination. The proportions of the accurately integrated electrical appliances are based on American standards: large, elegant and in stainless steel look.





INVITING.

The open room concept with an island solution and transition to the living area offers the perfect ambience for spending time with family and friends over dinner, and winding down at the end of the day in a relaxing atmosphere.





Middle East

living

- 15 Hilltop Residence | Beirut | **66**
- 16 Basma B | Kuwait City | **36**
- 17 Kazerooni Compound Saar | Manama | **130**
- 18 Adil Trading Villas | Doha | **40**
- 19 Burj al Salam | Dubai | **180**
Ontario Tower | Dubai | **285**
- 20 The Wave | Muscat | **3900**
- 21 Rafal Residence Project | Riyadh | **421**
- 22 Rocco Forte | Jeddah | **99**
- 23 Sunrise Project | Abuja | **37**
- 24 Sandy Lane | Accra | **16**
- 25 Jardins Abghour | Marrakesh | **107**
- 26 The Cliffs | Johannesburg | **5**

Competence centre

- FZE Dubai

MIDDLE EAST

Some local
Bites ...



QUESTION: What are the typical characteristics of the architecture in Middle East?

R. Selva Kumar:

Dubai offers a fascinating spectrum of buildings ranging from traditional to ultra-modern in a variety that reflects the character of the people living here.



*R. Selva Kumar,
Nolte Küchen Export-Partner Middle East*

ARCHITECTURE

QUESTION: *How has the architecture changed in recent years?*

R. Selva Kumar:
In recent decades, Dubai has undergone a style change that has been as rapid as it is comprehensive, and it's not finished yet. The most striking architectural highlights include the Burj Kalifa,Burj al Arab, the Palm Island and Dubai Marina – and the list goes on.

QUESTION: *What role does the kitchen as a living space play in Dubai today?*

R. Selva Kumar:
The kitchen is the heart of the home, and most new homes are designed with this in mind. The kitchen is no longer only the place for cooking, but a meeting place for the family and the room for social exchanges.



BASMA

PARTNER: KEO
LOCATION: KUWAIT CITY
NUMBER OF KITCHENS: 36





36

generous kitchens

KITCHEN: LUX

Generously planned for the perfect workflow: lots of space for preparing, cooking and washing up. The lavishly dimensioned storage options complement the available space for cooking with the whole family.

PERFECTLY PLANNED DOWN TO THE TINIEST DETAIL.

The kitchen concept appeals for its generosity and sophistication. Planning across corners helps to optimise the workflow, while the transition to the living room is seamless. Thanks to the bright, cheerful colours and handleless fronts, the kitchen radiates a calm atmosphere. One special highlight here: the illuminated finger pull.



RAFAL RESIDENCE PROJECT

PARTNER: RAFAL REAL ESTATE
LOCATION: RIYADH
NUMBER OF KITCHENS: 421



421

fabulous kitchen views

KITCHEN: MANHATTAN

To match the fabulous views from the building complex, the front in a natural wood effect provides a lively contrast to the urban setting.





NATURALLY URBAN.

The kitchen was designed with a strong feeling for details. The creative contrast between wood and steel gives the kitchen an extremely exclusive look, while the best possible use was made of the available space – plenty of storage options.



THE WAVE

PARTNER: THE WAVE, MAJID AL FUTTAIM INVESTMENTS LLC
LOCATION: MUSCAT
NUMBER OF KITCHENS: 3900





3900

individual kitchen concepts

**KITCHEN: MANHATTAN, SIGMA LACK,
NOVA LACK, SOFT LACK**

A vast project with 3900 kitchens, each one of which was individually designed to suit the particular spatial concept. The spectrum of front designs ranges from lacquer to an exclusive wood effect. With its handleless design, this version is definitely the right choice for lovers of style and design.



CLEVER PLANNING.

The perfectly matched warm colours give the kitchen a harmonious appeal. The counter creates a flowing transition to the living room, making it perfect for relaxing together.



BURJ AL SALAM

PARTNER: MR. ABDUL SALAM MOHD. AL RAF
LOCATION: DUBAI
NUMBER OF KITCHENS: 180



180

exclusive kitchen impressions

KITCHEN: GLAS TEC PLUS

The elegant glass front in night black exudes an understated elegance, and is beautifully complemented by the floor. This gives the kitchen a sophisticated character that is confirmed by the exclusive production.

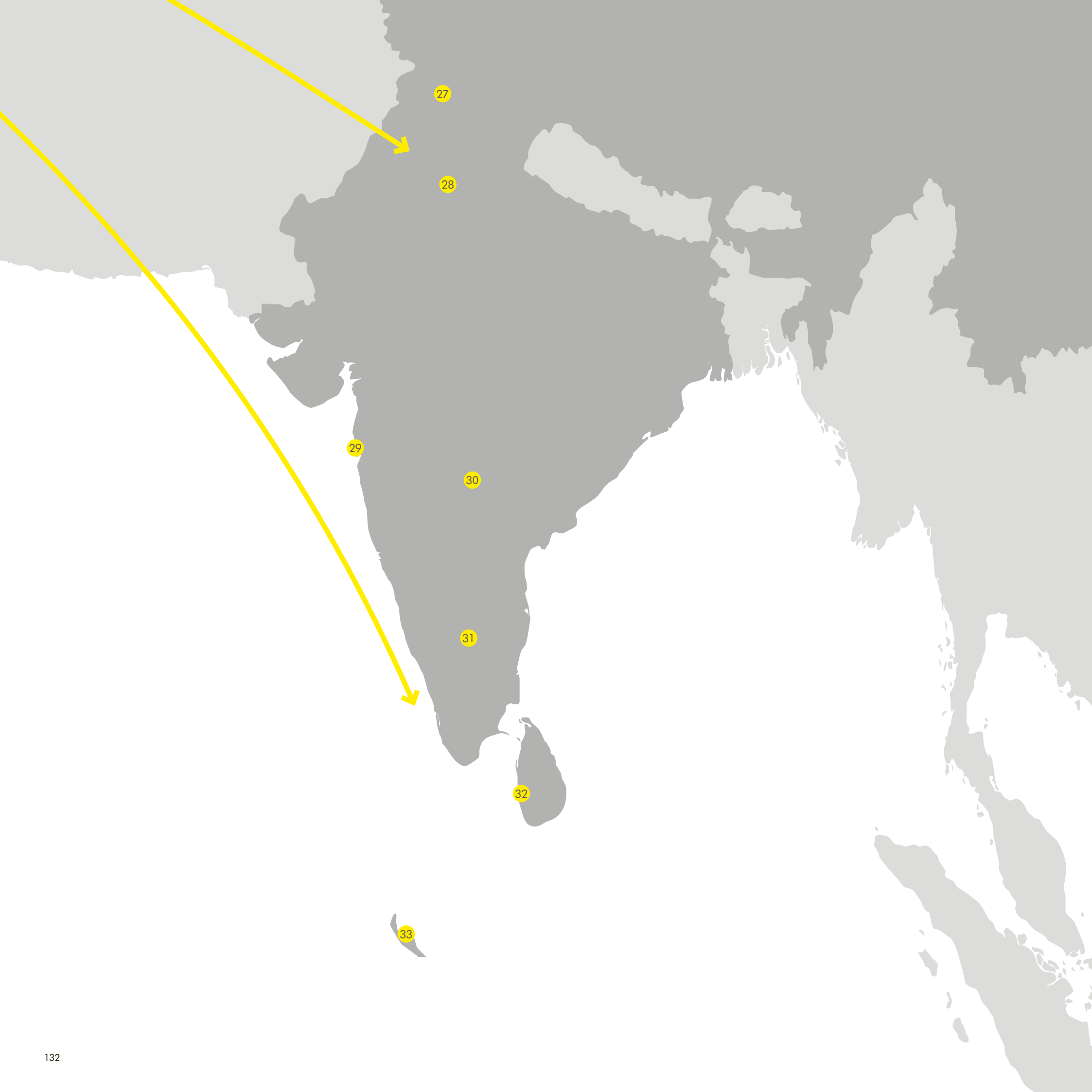




ERGONOMICALLY DESIGNED.

The eye-level electrical appliances provide an ergonomic working height. Which means the meal can be prepared and cooked in absolute comfort. The polished chrome handles are a visual accent and a perfect match for the high-gloss black front.





Indian

living

- 27 Janpath Colony Project | Ludhiana | **10**
- 28 Golf Estate | Delhi | **504**
- 29 Luxuria Priva Project | Mumbai | **225**
- 30 Golf Edge | Hyderabad | **467**
- 31 Embassy Grove Villa Project | Bangalore | **106**
- 32 Seven Sense | Colombo | **74**
- 33 Maafushivaru Villa Project | Male | **50**
Kuramathi Villa Project | Male | **151**

Some local *Bites ...*

A total of some 1.3 billion people with more than seven different religious backgrounds live in India. 18.4 million people live in the densely populated metropolis Mumbai on the west coast of India. Mumbai is the centre of science, and as home to the Bollywood studios also has a lively culture scene. Spring Festival, one of India's oldest festivals, also known as Holi in some areas, is now also celebrated in Europe.



ARCHITECTURE

The variety of its religions and cultures is also reflected in India's architecture. Impressive colonial buildings, temples, palaces and fortresses are elementary components of the buildings in India's larger cities such as Mumbai and New Delhi. Two of the best-known and most fascinating buildings in India are the Bahai Temple in New Delhi, which was built in the shape of a lotus flower, and the Chhatrapati Shivaji Terminus in Mumbai.



EMBASSY GROVE VILLA PROJECT

PARTNER: BRIGADE GROUP
LOCATION: BANGALORE
NUMBER OF KITCHENS: 106



106

perfectly combined kitchens

KITCHEN: GLAS TEC SATIN

A perfect world of its own: Embassy Grove offers work, life and leisure in a central spot in the pulsating city of Bangalore. Inspired modern architecture makes this exclusive community a unique place to live in.





INSPIRED.

The white real glass fronts harmonise perfectly with the wood-effect worktop. This combination creates a pleasant atmosphere in the kitchen, and the various seating opportunities are perfect for relaxing alone or with others. The open shelving and cleverly positioned light sources further enhance the feel-good character.



MAAFUSHI- VARU VILLA PROJECT

LOCATION: MALE
NUMBER OF KITCHENS: 50





50

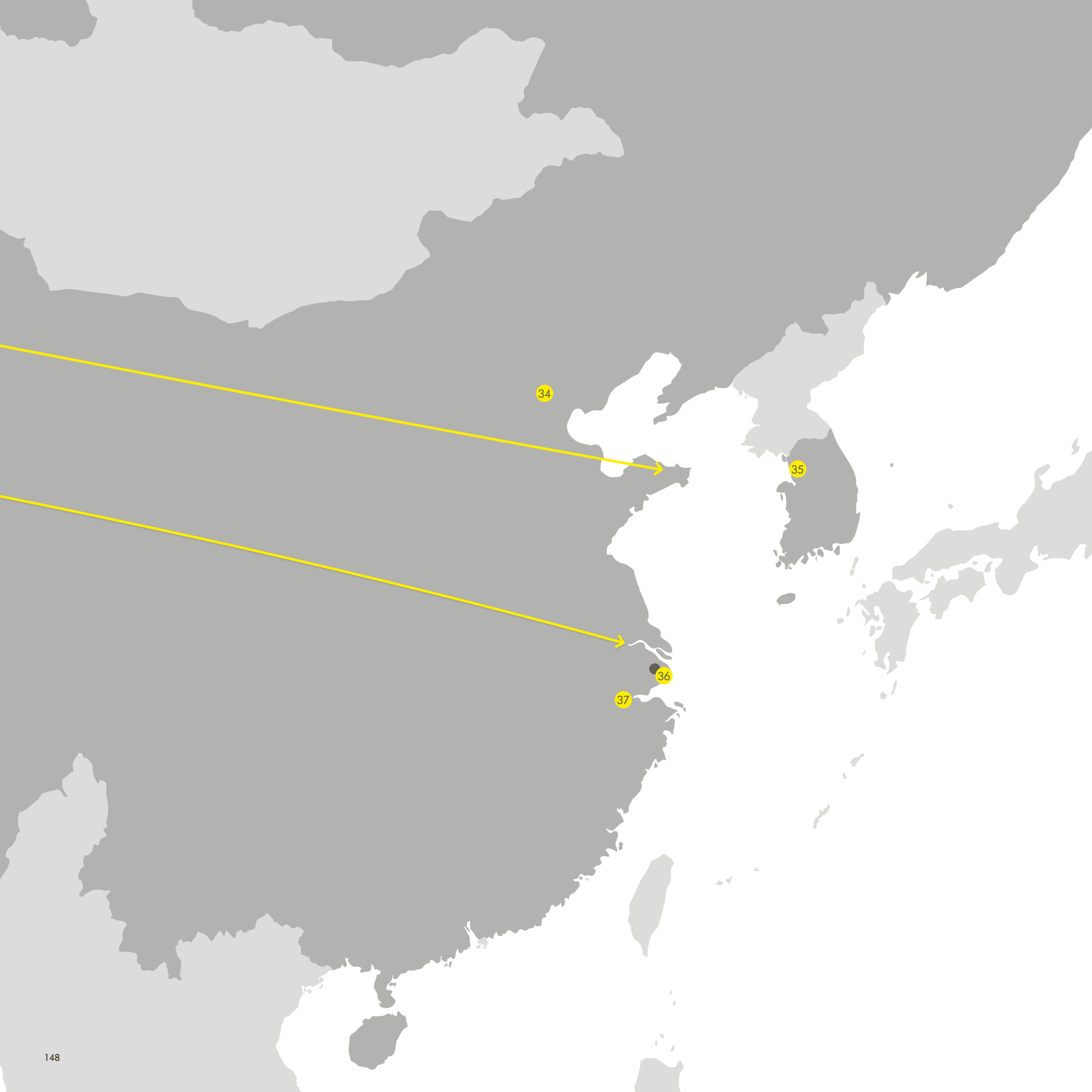
paradisiacal kitchens



KITCHEN: MANHATTAN

Nolte Küchen is also extremely successful in hotels: small kitchenettes were fitted in this tropical Garden of Eden with 50 units – to tremendous effect. They consist of a fridge and space for keeping the most essential utensils. The moor oak limed fronts blend subtly with the rest of the setting.





Asian living

- 34 The Chinese Imperial Seal Ya Lin Dong I Peking I **420**
Park 1872 I Peking I **251**
- 35 Yang Yang Golf Residence I Seoul I **132**
Golf Resort I Seoul I **132**
Camus Mockup I Seoul I **136**
- 36 Star River Pudong I Shanghai I **274**
Huamu I Shanghai I **705**
- 37 Quintang Impression I Hangzhou I **424**
Huajiachi I Hangzhou I **996**

Competence centre
● Shanghai

CHINA



Some local *Bites ...*

QUESTION: What are the typical characteristics of the architecture in China?

T. Nouredine:

In China, the contrast between traditional and modern architecture is impressive. The „Imperial Palace“ in Beijing is one example of how the Chinese were already building symmetrically centuries ago, and integrating traditional concepts such as yin and yang and feng shui. This is still reflected in almost all its buildings today. In addition, of course, there is still a tremendous need for housing today.



*Tatjana Nouredine,
Nolte Küchen Export-Partner China*

ARCHITECTURE

QUESTION: *How has the architecture in China changed in recent years?*

T. Noureddine:

The trend for sustainability is evident in China as elsewhere: caring for the environment and the use of environmentally-friendly materials are becoming increasingly important. At the same time, technological components complement the energy efficiency in homes. „Smart home” technology regulates and supports this trend.

QUESTION: *What role does the kitchen as a living space play in China today?*

T. Noureddine:

All in all, the division of the home has changed somewhat, and today the living room takes up the most space. Kitchens in China are defined more by their functionality, and remain a fairly small space for cooking and for storing utensils and goods. Design and ergonomics are extremely important here. On the other hand, the lifestyle of the Chinese is changing rapidly, resulting in new requirements. So the concept of the open living space that combines the kitchen and living room is becoming increasingly important.



IMPERIAL SEAL YA LIN

PARTNER: SHEKOU CHINA MERCHANTS
LOCATION: PEKING
NUMBER OF KITCHENS: 420





420

puristic kitchens

KITCHEN: NOVA LACK

Clear lines with no fuss in a puristic black-and-white, real lacquer in high-gloss Arctic white: a kitchen that fulfils all the design requirements of the user in every respect. The visibly exclusive manufacture further underscores this impression.

LIGHTING IS ATMOSPHERE.

Lighting in the kitchen not only creates a homely atmosphere or adds statements, it also makes us feel good. Modern LED technology produces a gentle light. The illuminated MatrixART finger pull, for example, creates a special ambience and underscores the kitchen's lines with tasteful and stunning effect. And the integrated wall-unit lighting conjures a warm and inviting ambience and a well-lit working area.



PARK 1872

PARTNER: SHEKOU CHINA MERCHANTS
LOCATION: PEKING
ANZAHL: 251



251

kitchen miracles

KITCHEN: LUX

Making the perfect use of the room: the perfectly-designed kitchen. There is plenty of storage space in the compact area, while two can share an early-morning coffee at the fold-down table.





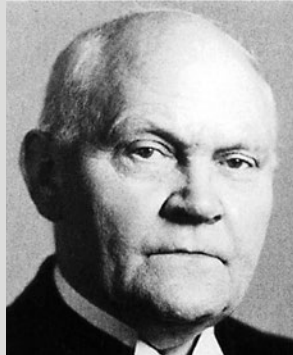
WELL-DESIGNED SPATIAL CONCEPT.

The light colours give the room a friendly character and make it appear bigger.
And the ergonomics have been thought of too, with the eye-level oven.



History

Insights into Nolte Küchens
history and production.



Georg Nolte



Konrad Nolte



Georg Konrad Nolte, Maren Schmitt-Nolte, Georg Nolte



1923

Georg Nolte started manufacturing polishing disks in Rheda, North Germany.

1945

Konrad Nolte took over the company management in Rheda.

1960

Nolte Küchen experienced a continuous upturn, and fitted kitchens with more and more technical details came on the market.



1980-1990

Nolte Küchen continued to grow thanks to its highly varied programme range, and by this time offered 300 different types of cabinet. Since then, the kitchen has become a space where the whole family communicates.



2000

Nolte Küchen launched the innovative drawer system ComfortLine for loads of up to 80 kg on the market.

The production of living and bedrooms began in a small furniture factory in Delbrück.

1932



The Nolte Küchen company is founded with 70 members of staff on a production space of 5,000 sq.m.

1958



By now, Nolte Küchen was offering 25 different kitchen designs with various fronts. The company became increasingly popular, as the result of which it increased its production facilities and purchased a piece of land in Melle.

1970



The 90s were a highly successful decade for Nolte Küchen. The number of staff increased to 900, and one of the most modern logistics centres in Germany was built in Melle.

1994





2003

PLANNING DEPTH 75 CM:

The planning depth of 75 cm gives you an extra 32% more storage space, while needing only an additional 15 cm at the wall.



2008

MATRIX 150
NOLTE KÜCHEN

Matrix 150 is a grid system introduced exclusively by Nolte Küchen which is based on a very simple and easy-to-follow dimensioning logic: all heights, widths and even the depths can be divided by 150 mm. The result is a huge range of planning options and a consistently attractive appearance. To this day, it remains the only three-dimensional grid on the market.



2014

MATRIX 900
by nolte KÜCHEN

The innovative carcass height of Matrix 900 makes the transition to the living area even more seamless: the very narrow plinth not only provides an ideal working height with 20% more storage space than the standard, but also creates a totally new kitchen look.



2018

Nolte Küchen's over 1,200 members of staff produce around 850 kitchens on more than 100,000 sq.m. at Löhne and Melle every day. Our kitchens are exported to more than 60 countries all over the world, and Nolte Küchen benefits from a strong global brand awareness.

SEALED EDGE:

For less dust inside the cabinet and gently closing drawers and doors.

2001



INTERIOR DECOR:

Perfect inside and outside: the carcass interior colour corresponds to the carcass exterior colour on all furniture types.

2004



The use of state of the art technology in production results in automation and enhanced qualification. Processing fronts, worktops, cupboards and finishing of surfaces and edges is optimized by fully automated, computer-operated machines. In combination with our highly skilled staff's finishing we achieve maximum precision even beyond handcrafted quality.

2013



20% more storage space is also possible without handles, and makes the kitchen even more graphic and sleek. The Nolte PremiumLine drawer and pull-out system provides perfectly organised access to cutlery, crockery and provisions with a unit width of up to 120 cm.

2016

MATRIXART 900
by nolte KÜCHEN



60 years of quality
60 years of innovations
60 years of perfect kitchens

